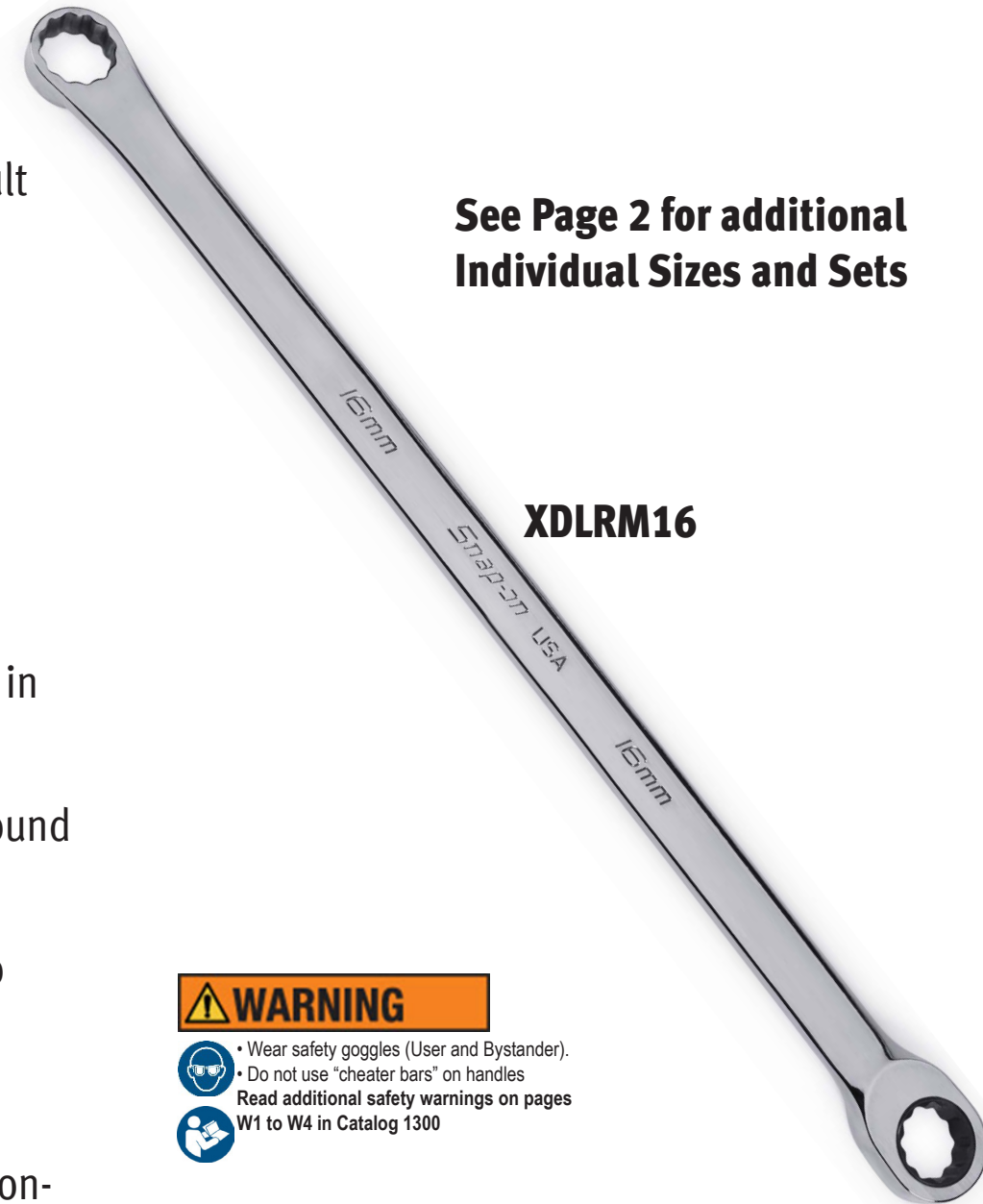




XDLR705 XDLRM705K1 XDLRM705K2 12-Point SAE and Metric Flank Drive® High-Performance Combination Ratcheting Box Wrenches

Features and Benefits

- Extended-length handle pattern, combined with 0° offset, increases leverage to maximize torque to break loose difficult fasteners
- Design of uni-directional, ratcheting gear utilizes innovative Snap-on® technology to deliver more power in less lateral space, helping to access and remove the most stubborn fasteners in tight spaces
- Ratcheting gears, with up-to 80 teeth, in conjunction with 8-tooth pawl, minimize swing arc needed to move fasteners in restricted spaces
- Gears are cold-formed and use the same proprietary steel found in Snap-on® sockets for ultimate toughness
- Flank-Drive® wrenching system on box-ends generates up to 15–20% more turning power than conventional wrenches, while minimizing risk of tool or fastener damage
- Wrenches are manufactured from special alloy steel, precision-forged and heat-treated for optimum strength and durability



See Page 2 for additional Individual Sizes and Sets

XDLRM16

WARNING

- Wear safety goggles (User and Bystander).
 - Do not use "cheater bars" on handles
- Read additional safety warnings on pages W1 to W4 in Catalog 1300

CE - Not Required

Country of Origin: USA

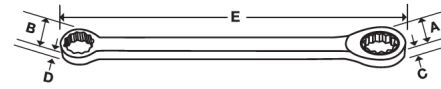


Snap-on is a trademark, registered in the United States and other countries, of Snap-on Incorporated. All other trademarks are marks of their respective holders. ©Snap-on Incorporated 2017. All rights reserved. Snap-on, 2801 80th Street, Kenosha, WI 53143 www.snapon.com



XDLR705 XDLRM705K1 XDLRM705K2

Specifications



XDLR705
XDLRM705K1
XDLRM705K2

Size	Stock No.	A	B	C	D	E			
5/16	XDLR10	21/32	29/64	1/4	1/4	9-1/16			
3/8	XDLR12	3/4	9/16	9/32	19/64	10-3/32	•		
7/16	XDLR14	17/32	39/64	5/16	11/32	10-39/64	•		
1/2	XDLR16	15/16	23/32	11/32	23/64	11-5/8	•		
9/16	XDLR18	1-1/32	13/16	11/32	13/32	13-1/4	•		
5/8	XDLR20	1-1/8	57/64	3/8	7/16	14-1/4			
11/16	XDLR22	1-7/32	15/16	13/32	7/16	14-49/64			
3/4	XDLR24	1-9/32	1-3/64	7/16	31/64	15-51/64	•		
8	XDLRM8	16.9	11.6	6.4	6.2	230.6			
9	XDLRM9	18.2	13	6.8	6.2	243.6			
10	XDLRM10	19.1	14.4	7.2	7.6	256.5			•
11	XDLRM11	21.1	15.6	7.6	8.5	269.5		•	
12	XDLRM12	22.7	17.1	8.1	8.9	282.4		•	
13	XDLRM13	24	18.7	8.2	8.9	295.4			•
14	XDLRM14	26.3	20.1	8.3	10.2	336.3		•	
15	XDLRM15	27.8	21.5	8.3	10.9	349.3			•
16	XDLRM16	28.4	22.6	9.8	11.2	362.2		•	
17	XDLRM17	30.5	23.7	9.9	11.3	375.2			•
18	XDLRM18	31.8	24.9	10.4	12.1	388.1		•	
19	XDLRM19	32.4	26.3	10.9	12.1	401.1			•

